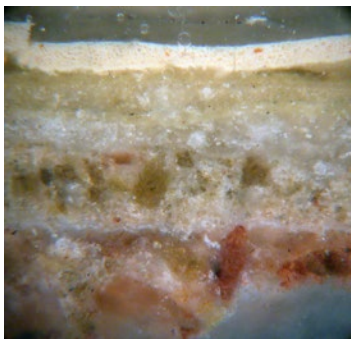


Garage at Glenmont, Edison NHP West Orange, New Jersey

Beginning in 1907, after Thomas and Mina Edison moved into the Llewelyn Park home known as Glenmont, Edison began designing a garage to house his nascent collection of vehicles, which, as an inventor, he was very interested in experimenting with and discussing design with his friend Henry Ford. By 1914 the garage was built, according to Edison's own design and using the poured concrete construction which he was also involved in developing and introducing to the home construction market at the time.



After decades of neglect, the National Park Service launched a restoration campaign in 2011 in order to open the garage and the collection of Edison's vehicles to the visiting public. Richbrook Conservation was commissioned initially for an analysis of the interior finishes in order to establish the earliest intent for the interior. Analysis established that the exposed concrete walls were finished with a simple, utilitarian cement wash in a neutral buff color, which had later been overpainted with limewashes, then more recently with modern synthetic-based paints which were leading to widespread paint failure.



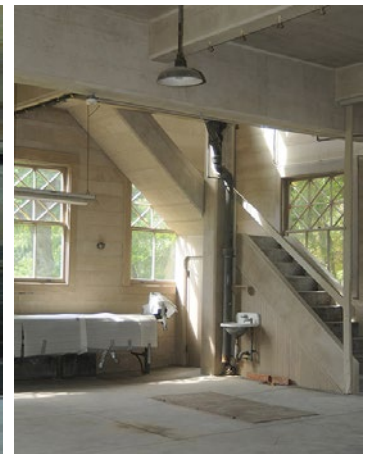
Beginning in 2014, Richbrook Conservation was hired to develop and implement a research and testing program to source an appropriate reproduction material, by testing the material properties of product options, including on-site adhesion testing, as well as assessing the visual character of candidate products, for best aesthetic match to the original cement wash.



Based on the performance and aesthetic criteria, one product was ultimately selected for application, a proprietary cement-based thin-coat plaster, considered an in-kind material choice. With the Contractor selected, Richbrook Conservation worked with them on site to properly prepare surfaces for re-finishing, identifying conditions requiring repair, and monitoring proper mixing, installation and wet-cure procedures for the product, including the simulation of the original formwork lines.



All development and installation work was documented in a final treatment report which included field reports and photodocumentation.



The interior restoration and the opening to the public of Edison's garage was celebrated in 2015 with a Concours d'Elegance on the Glenmont lawn.

Owner: National Park Service
 Client: Edison Innovation Foundation
 Team: Richbrook Conservation;
 Nora H. Johnson Specialty Finishes;
 Cultural Heritage Conservation LLC;
 notadesign